

Concerto per Flautino RV 443

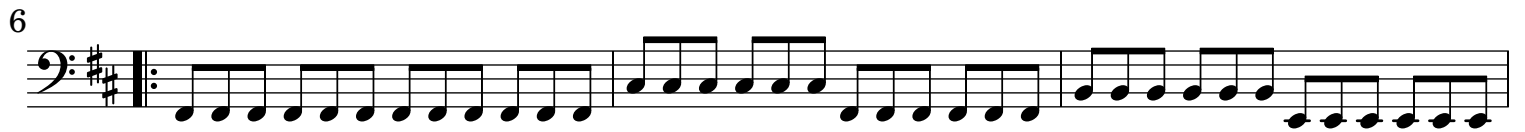
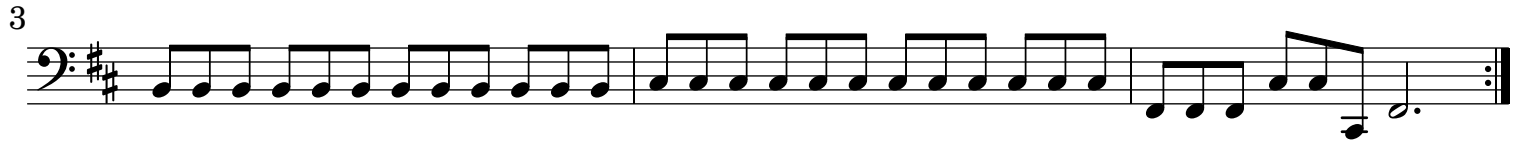
Basso

A. Vivaldi (1678-1741)

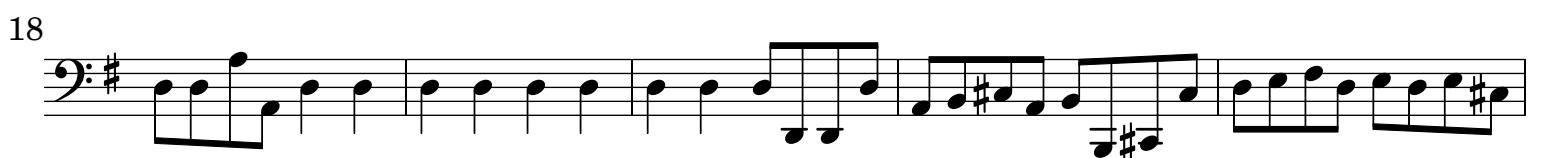
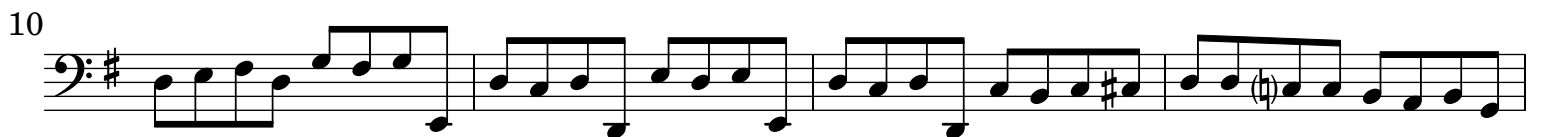
[1.] [Allegro]

The image displays the bassoon part of the first movement of Vivaldi's Concerto per Flautino RV 443. The score is written in bass clef with a key signature of one sharp (F#) and a 3/4 time signature. It consists of 15 staves of music, with measure numbers 9, 18, 30, 40, 48, 71, 79, 91, 107, 117, and 147 marked at the beginning of their respective staves. The music features a variety of rhythmic patterns, including eighth and sixteenth notes, and rests. There are several repeat signs with first and second endings indicated by the numbers 16, 5, and 20. The piece concludes with a final cadence in the last staff.

[2.] Largo



[3.] Allegro molto



23



28



33



37



42



47



52



57



62



68



73

